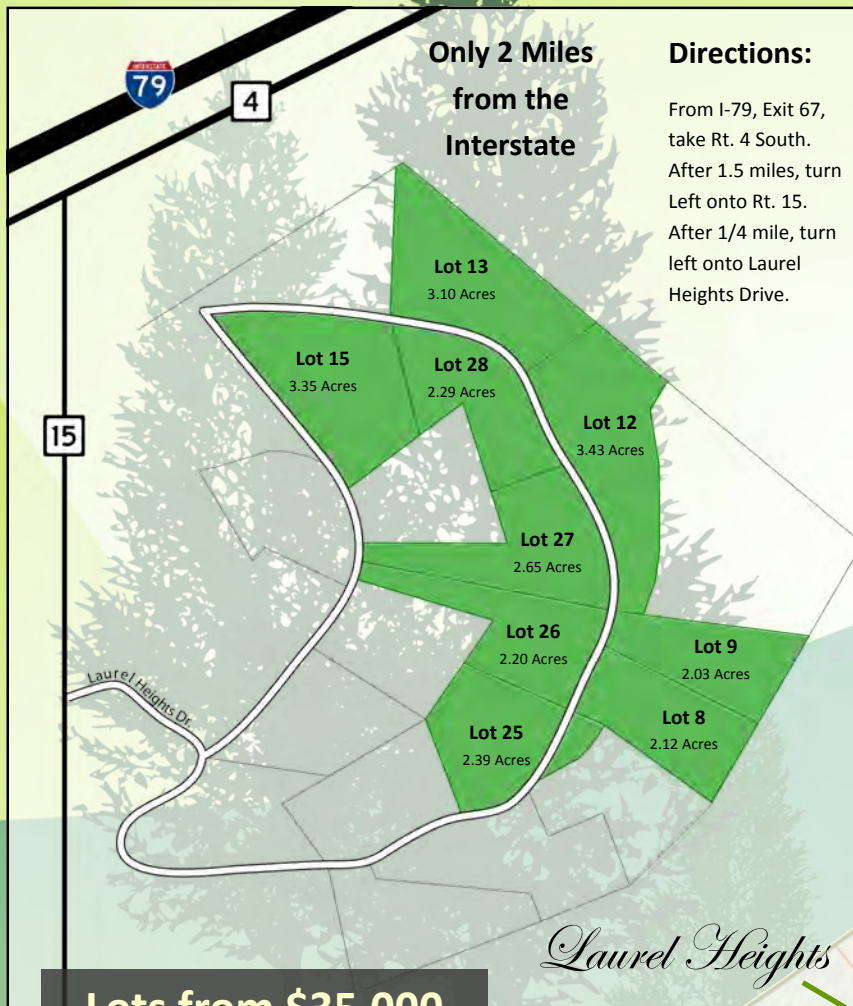


Laurel Heights

A Premiere Location in the
Scenic Mountain Lakes Region
of West Virginia

Beautiful and Private 2 and 3 Acre Lots Available



- All Underground Utilities including City Water
- Owner Protections including:
 - Minimum size and location requirements for a single family dwelling
 - Number of structures on premises
 - Covenants to maintain a private, peaceful and scenic community.



- Convenient access, just minutes from I-79, Exit 67
- Close to Sutton and Burnsville Lakes
- Borders Holly Gray Park & minutes from Bee Run Recreational Area on Sutton Lake
- Only a 35 minute drive to the Glenville FCI.



Contact:
John Skidmore Development Inc
ph: 304-765-7880
web: www.flatwoods.com

